

Background

- Retail pharmacy staff report interactions with patients exhibiting warning signs of suicide, including requests for fatal dosing information.
- Pharmacists are trained in suicide prevention but report feeling unprepared for these interactions in retail settings.

Objective

To design and test an on-line gatekeeper training (Pharm-SAVES) versus PharmSaves+ (interactive component) for knowledge, confidence, preparedness, and communication/referral behaviors for warning signs of suicide.

Methods

Sample: A convenience sample of 120 pharmacy staff in about 100 stores in 4 southeastern states

Study design: Cluster randomized trial with a control (Pharm-SAVES) and experimental group (Pharm-SAVES+)

Interventions: Pharm-SAVES is a 30-minute online training to recognize, respond to, and refer patients with suicide warning signs. Pharm-SAVES+ adds 2 interactive video cases.

Measures: Responses to written cases in online platform:

Primary: Directly asked about suicide (Y/N)

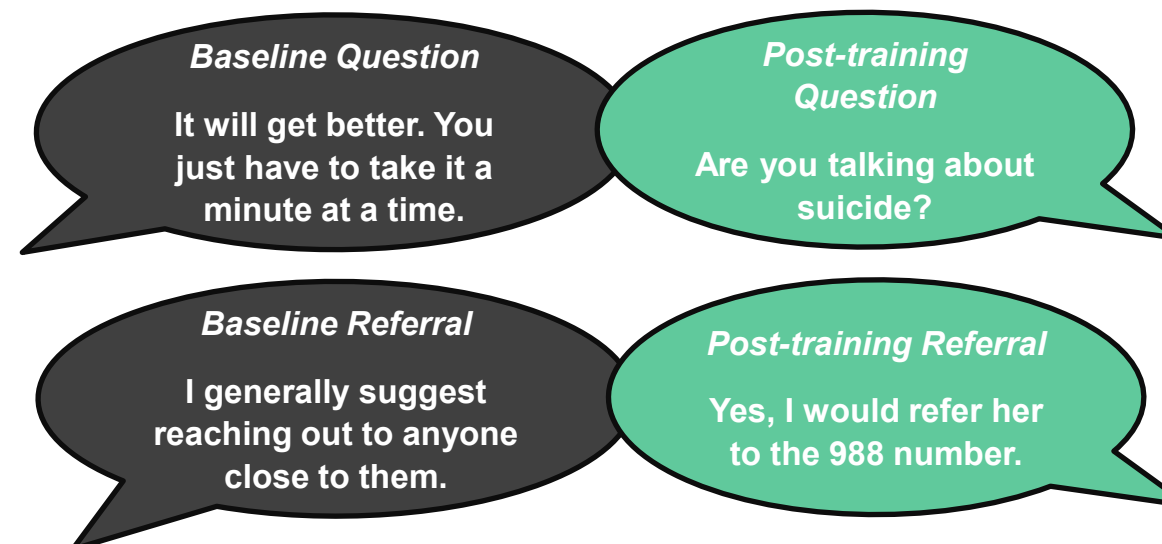
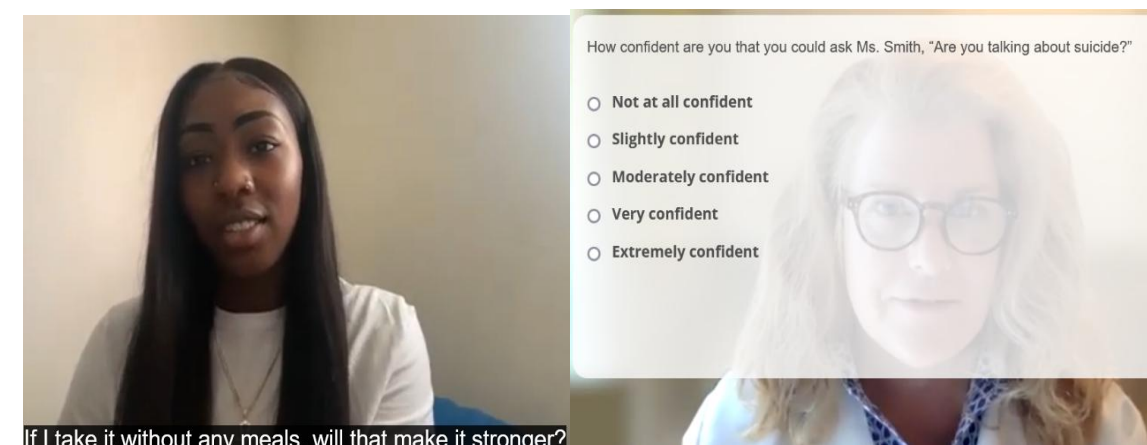
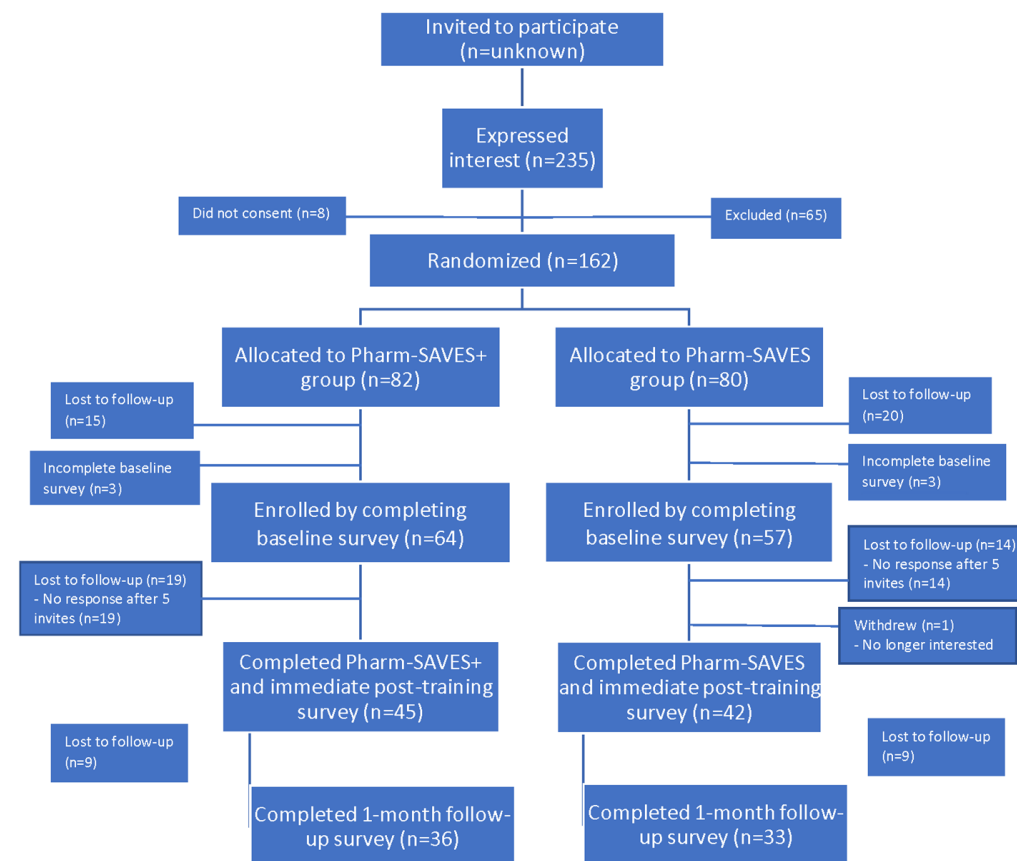
Secondary:

- Referred patient to 988 (Y/N)
- Suicide prevention knowledge (9 items)
- Gatekeeper self-efficacy (6 items)
- Gatekeeper preparedness (6 items)

Data Analysis: Generalized Estimating Equations (GEE) to examine outcomes variation by time (baseline, post-training, and 1-mo follow-up) and group (Pharm-SAVES, Pharm-SAVES+).

This research was supported by the American Foundation for Suicide Prevention, the Eshelman Institute for Innovation and the Department of Veterans Affairs.

Results



This research was reviewed and deemed exempt by the UNC Human Subjects Review Board.

The authors have no conflicts of interest to report.

Sample Characteristics	Pharm-SAVES N=56, N (%)	Pharm-SAVES+ N=64, N (%)
Age in years		
18-29	18 (32%)	15 (23%)
30-39	16 (29%)	19 (30%)
40-54	15 (27%)	22 (34%)
55+	7 (13%)	8 (13%)
Female	42 (75%)	48 (75%)
Race/ethnicity		
White	50 (89%)	60 (94%)
Non-white	6 (11%)	4 (6%)
Role		
Pharmacist	42 (75%)	45 (70%)
Technician	12 (21%)	18 (28%)
Other	1 (2%)	0

Written Case Outcomes (N=86)	N (%) Baseline	N (%) Post-training
Asked a direct question about suicide	12 (10%)	61 (71%)
Expedited a referral to 988	43 (54%)	64 (74%)

Survey Outcomes (N=69)	Baseline Mean (SE)	Post-training Mean (SE)	1-month f/u Mean (SE)
Suicide prevention knowledge; range 0-9	5.5 (0.14)	7.2 (0.12)	7.5 (0.13)
Gatekeeper self-efficacy; range 1-5	2.7 (0.07)	3.7 (0.07)	3.6 (0.08)
Gatekeeper preparedness; range 1-7	3.3 (0.12)	5.3 (0.12)	5.3 (0.13)

GEE Results for All Models
• Intervention group not significant, Time significant (p<0.01)
• Interaction term not significant

Conclusions

- The 30-minute online training produced a similar learning outcome with and without interactive active learning.
- Most respondents recognized suicide warning signs and referred to #988 up to 1 month after training, and were unable to do so at baseline.